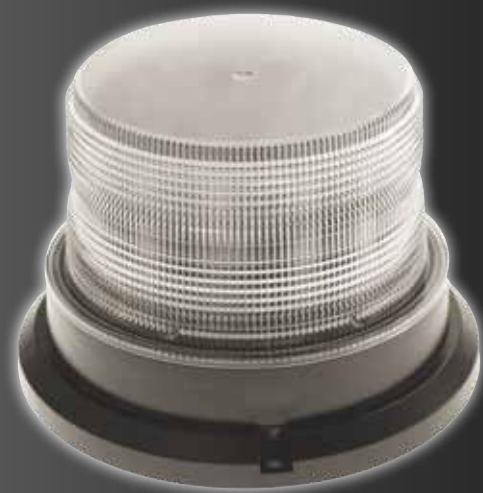
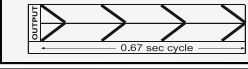

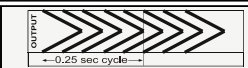

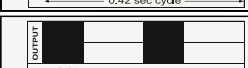


LV0650 AMBER LED BEACON

- 9-36V
- 12 High Power LED's
- 3rd generation LED Technology
- Polycarbonate Lens
- IP67 Rating
- 5 Built-in Flash Patterns
- Dimensions: 106 x 162mm



FLASH PATTERN & FREQUENCY

Mode	Flash pattern	
1	Rotating	
2	Double flashing <u>SAE J845 W3-2</u> <u>Class II Approved</u>	
3	Simulated rotating	
4	Quad flashing	
5	Consistent flashing	

LOAD RESISTORS

Load Resistors are designed to draw the same current as a 21 watt globe. Some vehicle lighting systems will not behave correctly when using low current draw LED lights. In order to correct this a Load Resistor can be fitted to compensate.

- High Power Rating
- Small Size
- High Stability

LV0490



LV0491



DRESS UP YOUR LOW VOLTAGE LED LIGHTS WITH THESE CHROME ACCESSORIES



LV0495

- Chrome Cover with switch
- Suits: LV0400, LV0401 & LV0402
- 1 Pair per pack



LV0496

- Chrome Bezel
- Suits: LV0460
- 1 Per pack



LV0497

- Chrome Bezel
- Suits: LV0461
- 1 Per pack



LV0498

- Chrome Bezel
- Suits: LV0462
- 1 Per pack



LV0499

- Chrome Bezel
- Suits: LV0360, LV0361, LV0362 & LV0363
- 1 Per pack

